

# EXHIBITION WHITE CITY





---

# ABOUT

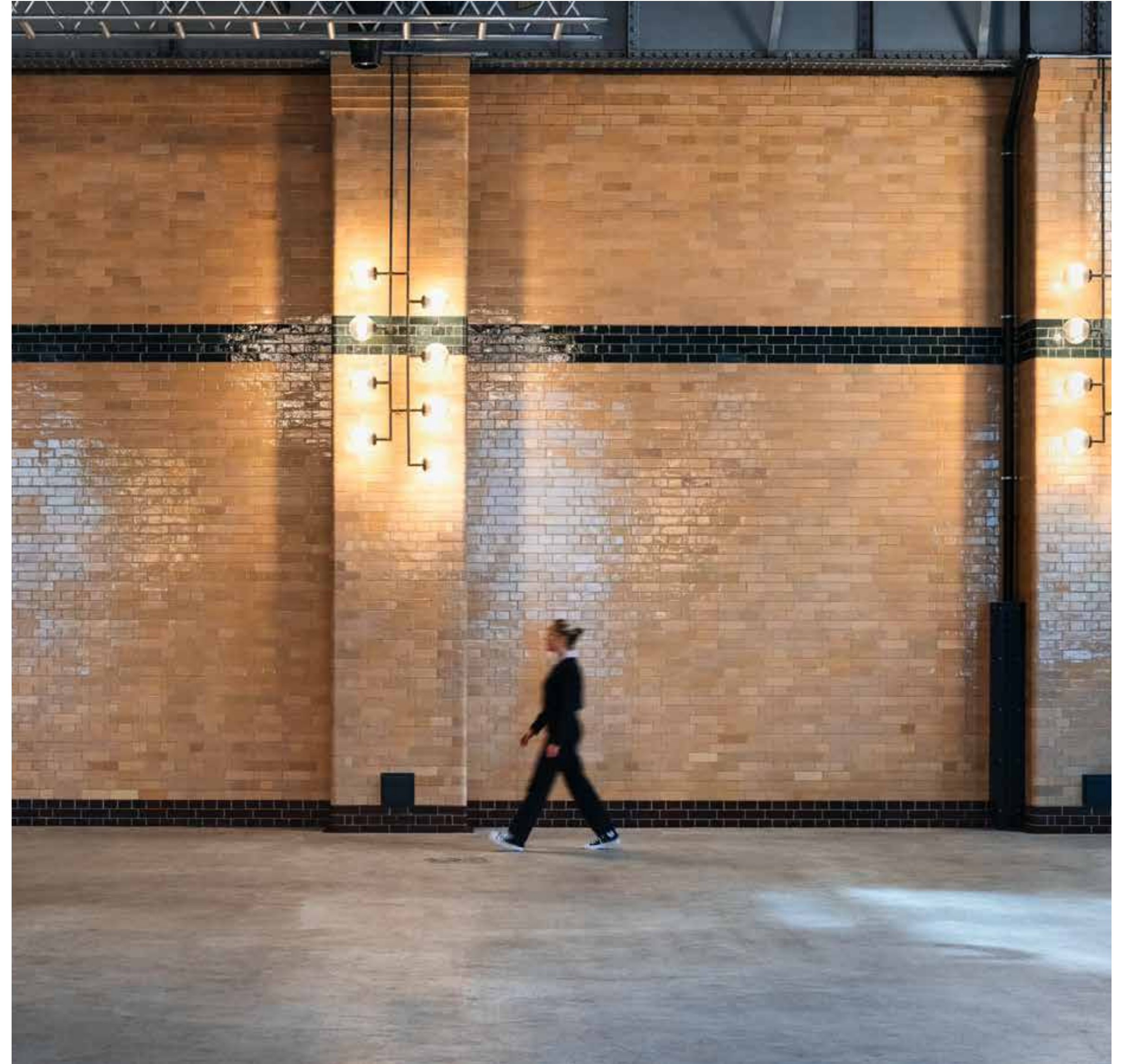
## EXHIBITION WHITE CITY

Exhibition White City is an impeccably restored Grade II listed hybrid space situated in the heart of West London. Blending heritage, design and culture under one roof, this fully flexible event space accommodates up to 780 for dinners, 1,169 for conferences, 1,500 for receptions and up to 2,800 for music events.

The structure was built in 1899 for Central London Railways and retains iconic TFL design features such as tiled interior walls and factory arch windows. More so, the venue invokes the spirit of openness and commitment to public good that created the city's public transit system. The slogan 'for the use of benefit of the people of London', is fitting inspiration for a new cultural centre of the Westfield development, one of the city's busiest and most vibrant areas.

The venue spans two floors and over 1,200 square metres of flexible event space, with removable staging infrastructure, two full-length bars and state-of-the-art sound and lighting system.

The building is named after the Franco-British Exhibition of 1908, which invited more than 8 million people to White City to celebrate international culture and collaboration. Like its namesake, Exhibition White City welcomes a broad range of large-scale events, from live music and exhibitions to conferences, award dinners, product launches and location filming.



# SPECIFICATIONS

Note: Individual space capacities are subject to seating, production, event activities and fire exits

<b>SPACES</b>	<b>L(M)</b>	<b>W(M)</b>	<b>H(M)</b>	<b>SQM</b>	<b>RECEPTION</b>	<b>THEATRE</b>	<b>CABARET</b>	<b>DINNER</b>
Ground Floor	26	16	3	416	1,000	-	150	320
First Floor	33	25	5.5	825	1,500	1,169	468	780
The Mezzanine	15	10	4	150	80	-	-	-



# SPACES

## GROUND FLOOR

Guests are welcomed into 416 square meters of striking foyer and reception space, featuring a long, beautifully crafted bar with a high spec LED screen above it. With polished concrete flooring and atmospheric decorative lighting, the Ground Floor creates an inviting ambiance. This level also offers convenient cloakroom and WC facilities, along with access to four dressing rooms, and The Shop – an additional hybrid space that can be used as a production office, green room, storage or breakout area.

The foyer is perfectly suited for pre-dinner drinks receptions, informal catering, or breakout sessions, and can also seamlessly expand into the First Floor for larger exhibitions and events. This space can accommodate up to 1,000 for a standing reception or 320 for a seated dinner.

416 sq m | 26m(l) x 16m(w) x 3m(h) | max capacity: 1,000

Note: Individual space capacities are subject to seating, production, event activities and fire exits.



# SPACES

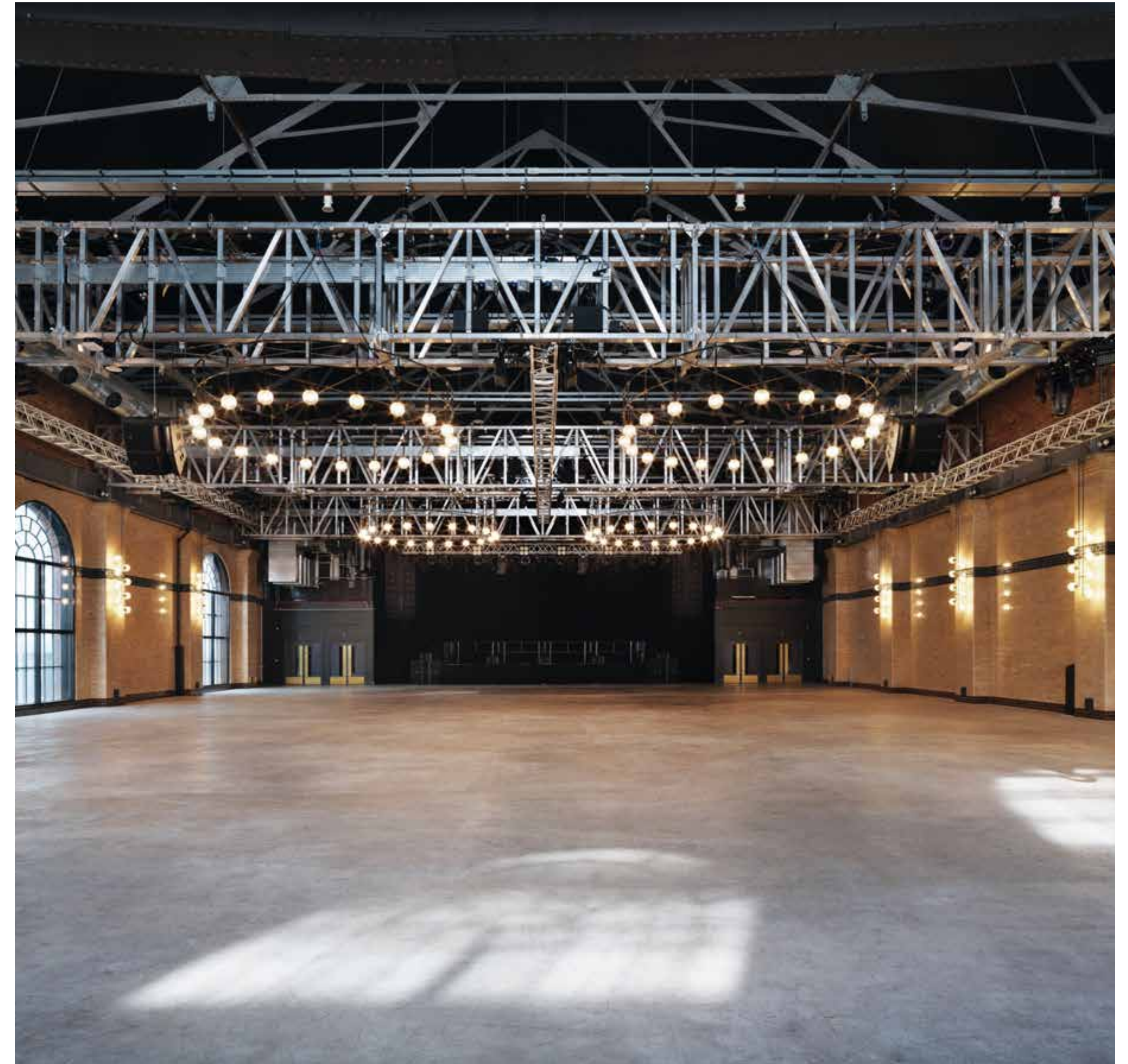
## FIRST FLOOR

The First Floor of Exhibition White City is an impressive 825 square meters of event space, accessible via two striking black steel staircases. As guests enter, they are met with the grandeur of the original high-pitched ceiling, exposed roof trusses, and a historic crane structure, all complemented by polished concrete floors and ambient lighting. The space features a long beautiful bar, with a high spec LED screen above it, as well as five projector screens that also double up as blinds, providing the option of either blacking out the space or exposing natural light through the beautiful arched windows.

This adaptable floor features removable staging, providing flexibility for various event configurations. Fitted with a state-of-the-art digital audio system and high-end lighting rig, the venue offers a flawless plug-and-play experience for live music and other large-scale events.

825 sqm | 33m(l) x 25m(w) x 5.5m(h) | max capacity: 1,500

Note: Individual space capacities are subject to seating, production, event activities and fire exits.











# SPACES

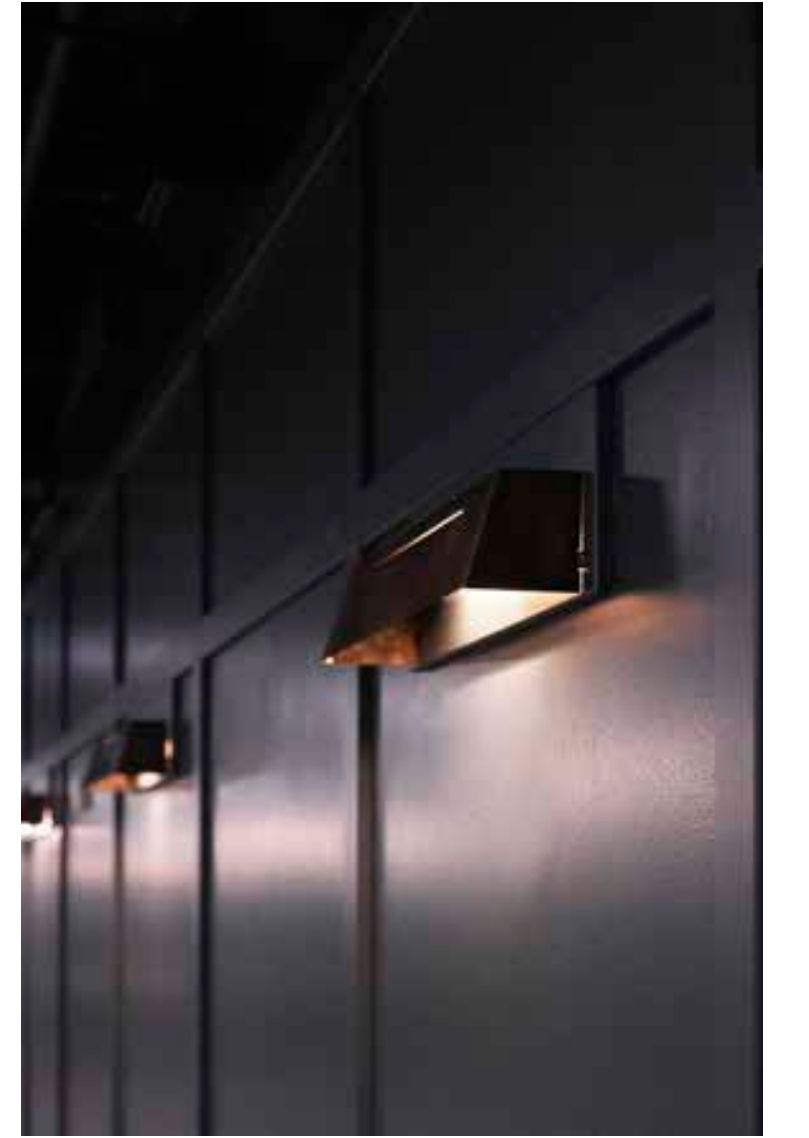
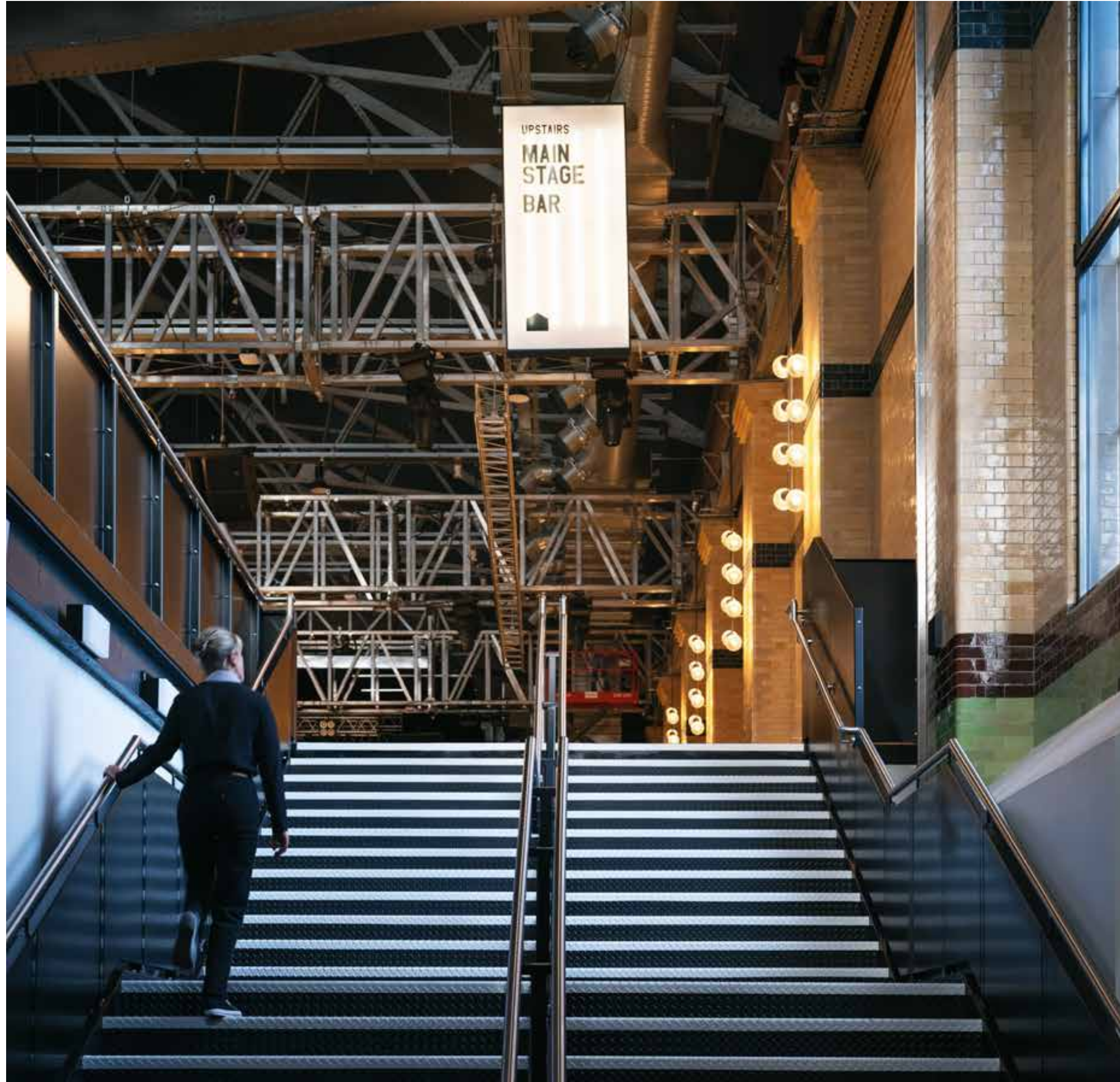
## THE MEZZANINE

A private mezzanine overlooks the First Floor, offering a prime view of the stage. The design of the Mezzanine mirrors the aesthetics of the space below, featuring jet black flooring and booths with soft under-lighting. This area can seat around 50 people and accommodate 80 standing, making it ideal for breakout spaces, a VIP area, or back of house.

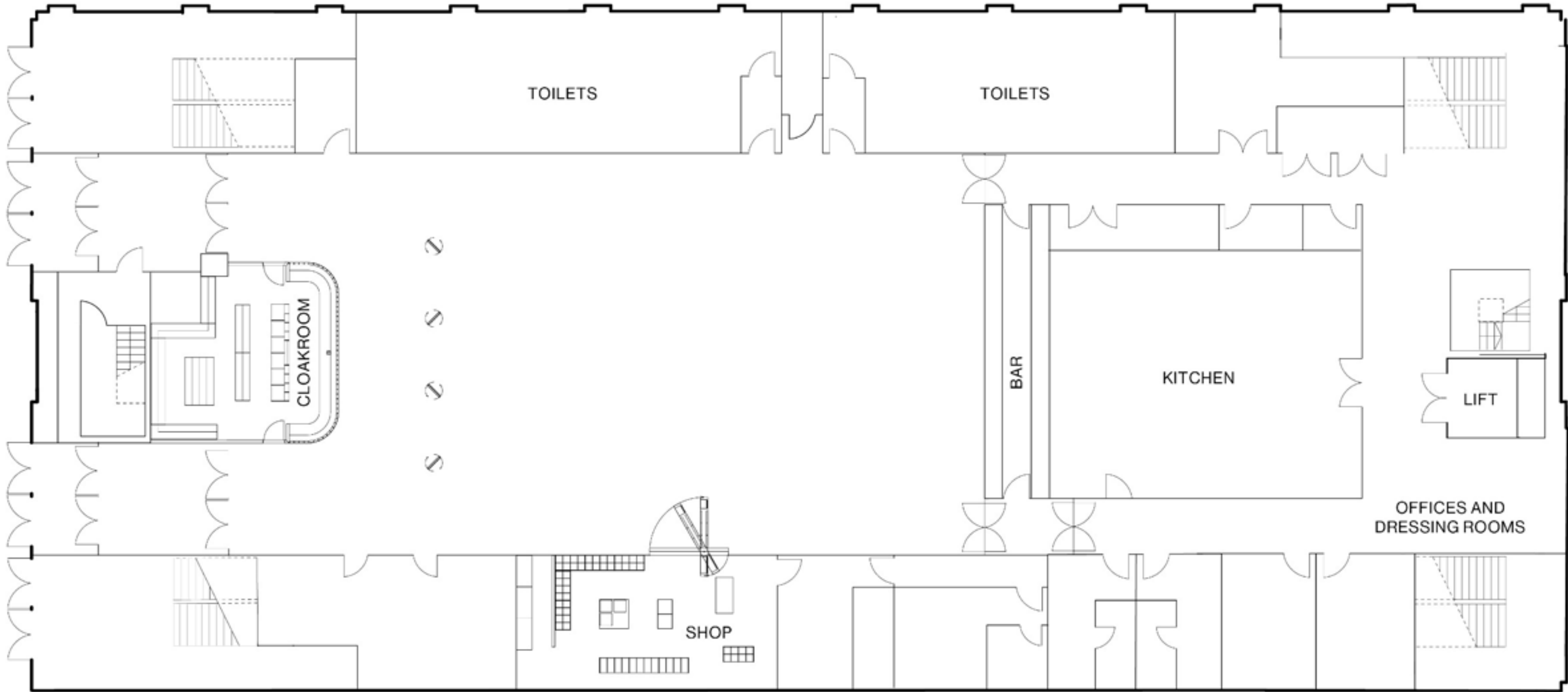
150 sq m | 15m(l) x 10m(w) x 4m(h) | max capacity: 80

Note: Individual space capacities are subject to seating, production, event activities and fire exits

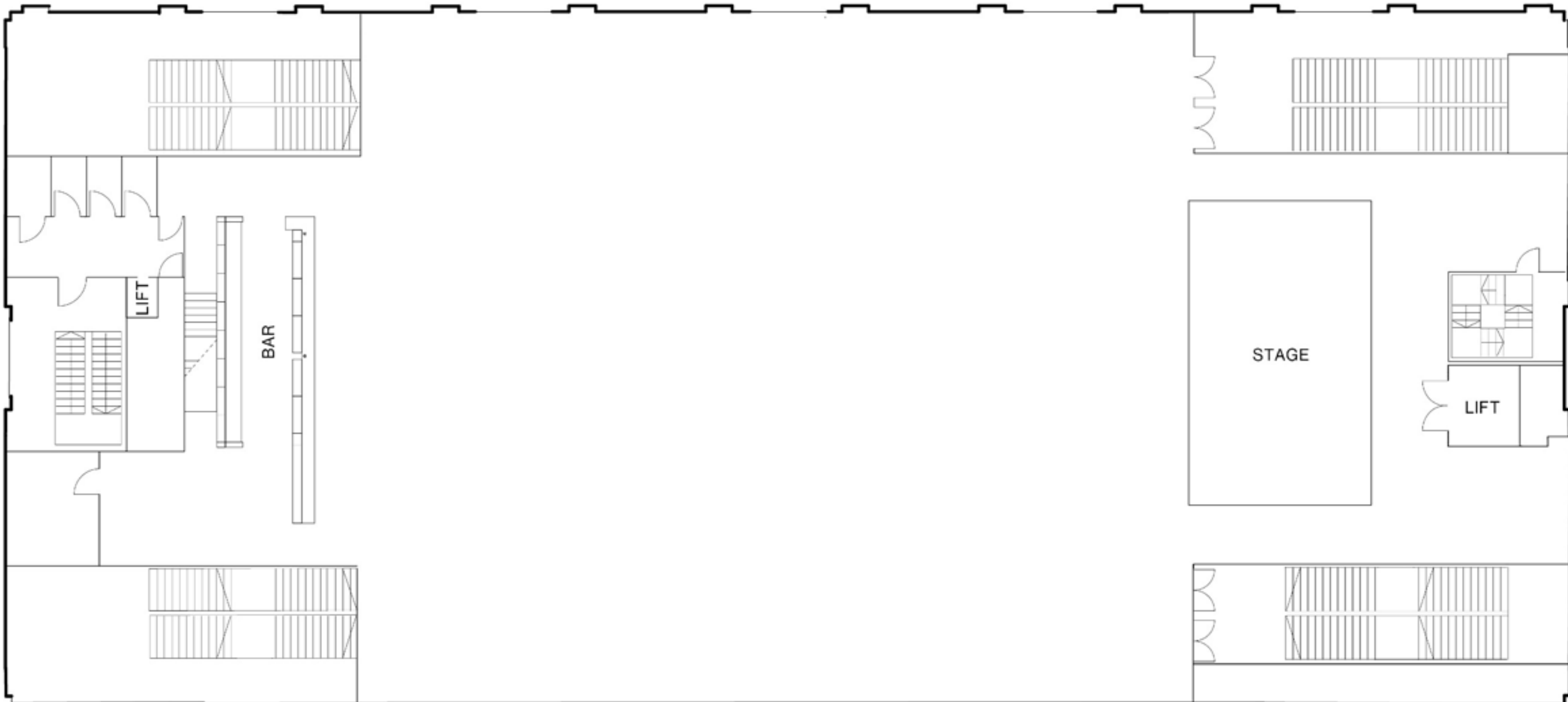




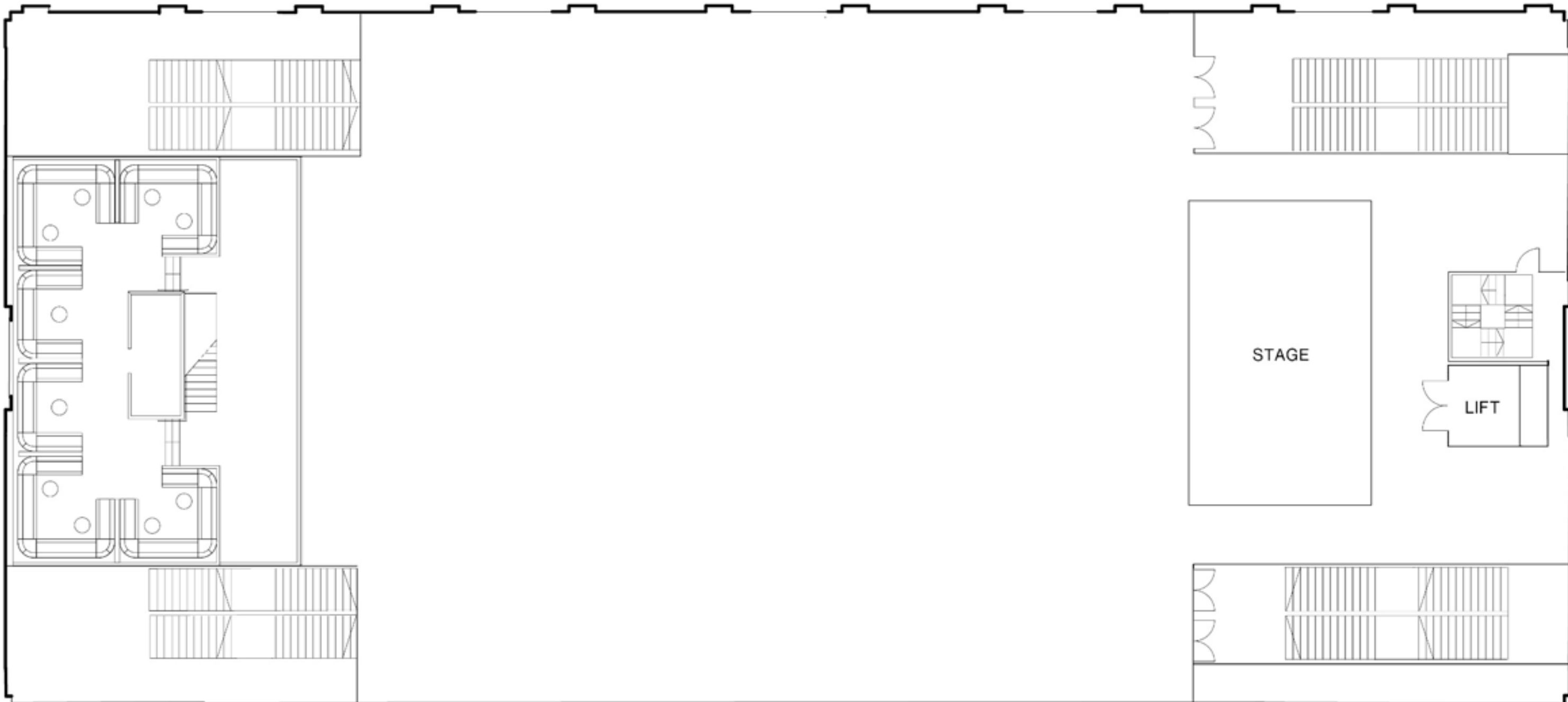
# FLOORPLANS GROUND FLOOR LAYOUT



# FLOORPLANS FIRST FLOOR LAYOUT



# FLOORPLANS THE MEZZANINE LAYOUT





EXHIBITION  
WHITE CITY

EXHIBITION  
WHITE CITY

EXHIBITION  
WHITE CITY

---

# ADDITIONAL INFORMATION

## EVENT TIMINGS

08:00 - 01:00

## ADDITIONAL ROOMS

Additional rooms are located on the Ground Floor as follows:

Dressing Rooms 1 & 2: 16 sqm, includes shower room, toilet, sofas and desk. Suitable for 6 people

Dressing Room 3: 15.8 sqm, includes shower room, toilet, sofas and desk. Suitable for 4 people

Dressing Room 4: 11.6 sqm, includes shower room, toilet, sofas and desk. Suitable for 4 people

The Shop: 10m x 4.5m / 45 sqm, suitable for up to 30 people

## DISABLED ACCESS

All areas of venue, apart from the Mezzanine, are accessible, with large lifts and toilets on both floors

## INTERNET

There is Free Wifi available to organisers which is capped at 2Mbps per device for 20-30 users. This can be upgraded via our partner Noba for your event

## CLOAKROOM

A large onsite, fully equipped cloakroom

## TOILETS

The bright and modern bathrooms serve up to 2,800 guests. There are 26 female cubicles, 5 male cubicles + 30 urinals and an accessible toilet, all located on the Ground Floor

## KITCHEN

The venue has a fully functioning kitchen located on the Ground Floor

## PRODUCTION & PARKING

There is ample parking available at the Westfield car parks. Production parking, including space for Outside Broadcast Trucks and articulated lorries can be arranged, subject to requirements. There is no onsite parking

## VENUE ACCESS

The loading area is suitable for one articulated lorry and two vans. There is potential access to holding bays within Westfield for further vehicles





# PRODUCTION PARTNER

Vibration Production is the in-house production partner who specialise in creating immersive and high-energy events. They provide services ranging from sound, lighting, and stage design to full production management. Known for their expertise in the technical aspects of live events, they cater to concerts, festivals, corporate functions, and brand activations. Vibration Production focuses on delivering seamless, impactful experiences, with an emphasis on cutting-edge technology and creative production solutions to enhance guest experience.



# CATERING PARTNERS

## KERB

A London-based street food collective bringing together independent vendors, brewers, and distillers. KERB specialises in creative, street-food-style catering, offering diverse cuisines and vibrant culinary experiences for corporate functions and private events.

## FOOD BY DISH

One of London's top contemporary caterers, Dish offers a personalised service, collaborating with clients from initial enquiry to the final touches. Known for their attention to detail, they cater anything from private celebrations to large scale conferences and awards dinners in London's most iconic venues.

## ALISON PRICE

A luxury catering company with a reputation for high-end, bespoke services. They cater to exclusive private events and corporate clients, offering gourmet cuisine and exceptional service. With decades of experience, Alison Price is renowned for its meticulous planning, creative menus, and premium dining experiences.



# BRANDING OPPORTUNITIES

Exhibition White City offers numerous branding opportunities across its expansive venue, providing a prime platform to showcase your brand. From high-traffic areas like entrances, walkways, and lounge spaces to customisable bars and digital displays, there are endless possibilities to increase visibility and engage with attendees.

The venue has also partnered with Westfield London to offer brands unique opportunities to elevate their presence through impactful media and event spaces within the shopping centre and its surroundings. Brands can craft memorable marketing campaigns that centre around a flagship event at Exhibition White City, leveraging Westfield's expansive digital network, including eight large landscape LED screens, prominent media banners, and prime locations for sampling and leafleting.



Exhibition White City

Venue Hire





EXHIBITION

the blue paradox

EXHIBITION

The 2020 average  
weight of plastic used in the  
UK is 1.5kg per person.

It would take  
450,000  
double-  
decker  
buses  
to equal  
the plastic  
dumped  
into the  
ocean  
each year.

We could be  
consuming  
over 50,000  
microplastic  
particles a yr

What  
difference  
does  
a drop  
in the  
ocean  
make?



# NEIGHBOURHOOD

## ADDRESS

Ariel Way London W12 7GF

## LOCATION

Located in the historic White City district, Exhibition White City is more than just a venue, it's a gateway to a vibrant, culturally rich neighbourhood. The surrounding area offers a dynamic blend of world-class dining, retail, cultural landmarks, and serene green spaces, making it an ideal location for guests to explore before or after their event.

## ACCOMMODATION

White City House, Dorsett, K West & Hilton London Kensington.

## FOOD & DRINK

The Allis, Bluebird Cafe, Flying Horse Cafe, Ole and Steen, Binda's, Eatery, White City House, The Broadcaster & Prairie Fire.



# TRANSPORT

## UNDERGROUND

Four Underground stations provide easy access to Exhibition London, which is just a few minutes walk away.

Central Line: Shepherd's Bush and White City.

Hammersmith & City Line: Wood Lane and Shepherd's Bush Market.

## OVERGROUND

The Shepherd's Bush National Rail station has direct connections to Willesden Junction, Kensington Olympia, West Brompton and Clapham Junction. Services run every 15 minutes in each direction Monday to Saturday, with 1-2 trains each hour on Sundays.

## BUS

White City Bus Station: 31, 49, 148, 207, 237, 260, 607 and C1

Shepherd's Bush: 72, 94, 95, 220, 272, 283, 295 and N207



THANK YOU  
ARIEL WAY, LONDON, W12 7SL  
HIRE@EXHIBITIONWHITECITY.COM  
020 8498 4937

FOLLOW @EXHIBITIONWHITECITY

