



EXHIBITION  
LONDON

---

# HIRE AT EXHIBITION

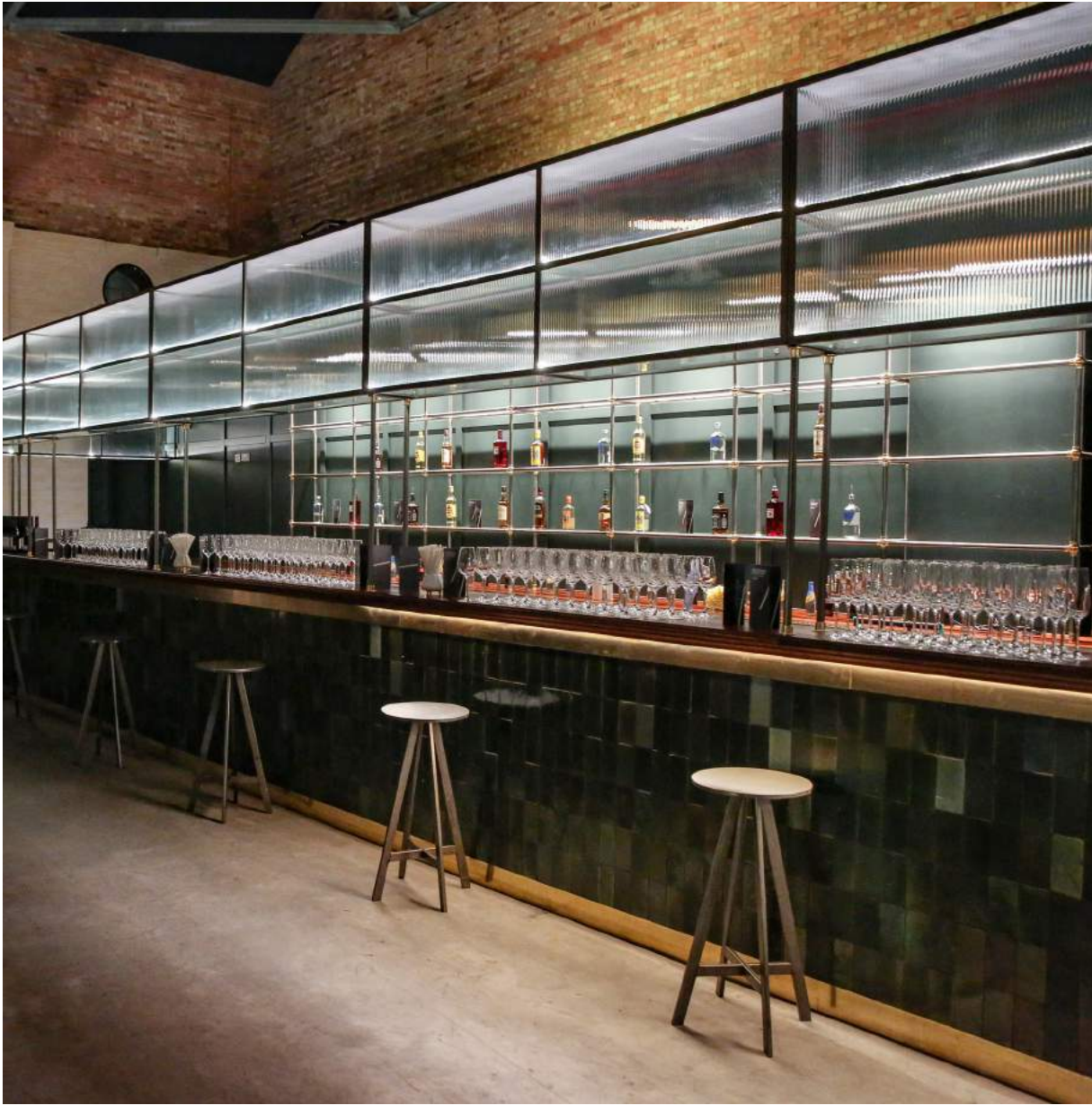
# A NEW MULTI-USE SPACE

A collaborative project from Unibail-Rodamco-Westfield and Broadwick Live, Exhibition London is part of the £8 billion regeneration of White City and brings a welcome new destination for culture to west London.

Famously used as the location for the Acme Factory in iconic cult classic ‘Who Framed Roger Rabbit?’, Exhibition London is scheduled to open its doors for the first time this November. Event venue specialists, Venue Lab, have been appointed to manage all filming, corporate and brand events, and are now taking bookings.

Broadwick Live are a creative agency and venue operator specialising in the repurposing and regeneration of large-scale event spaces. They are renowned for the highest quality of production and experimental programming.

Venue Lab curates and manages an ever-evolving portfolio of unique spaces. As a full-service agency, Venue Lab gives brands, event agents, corporate bookers, location scouts and filmmakers access to an array of impressive and exclusive spaces.

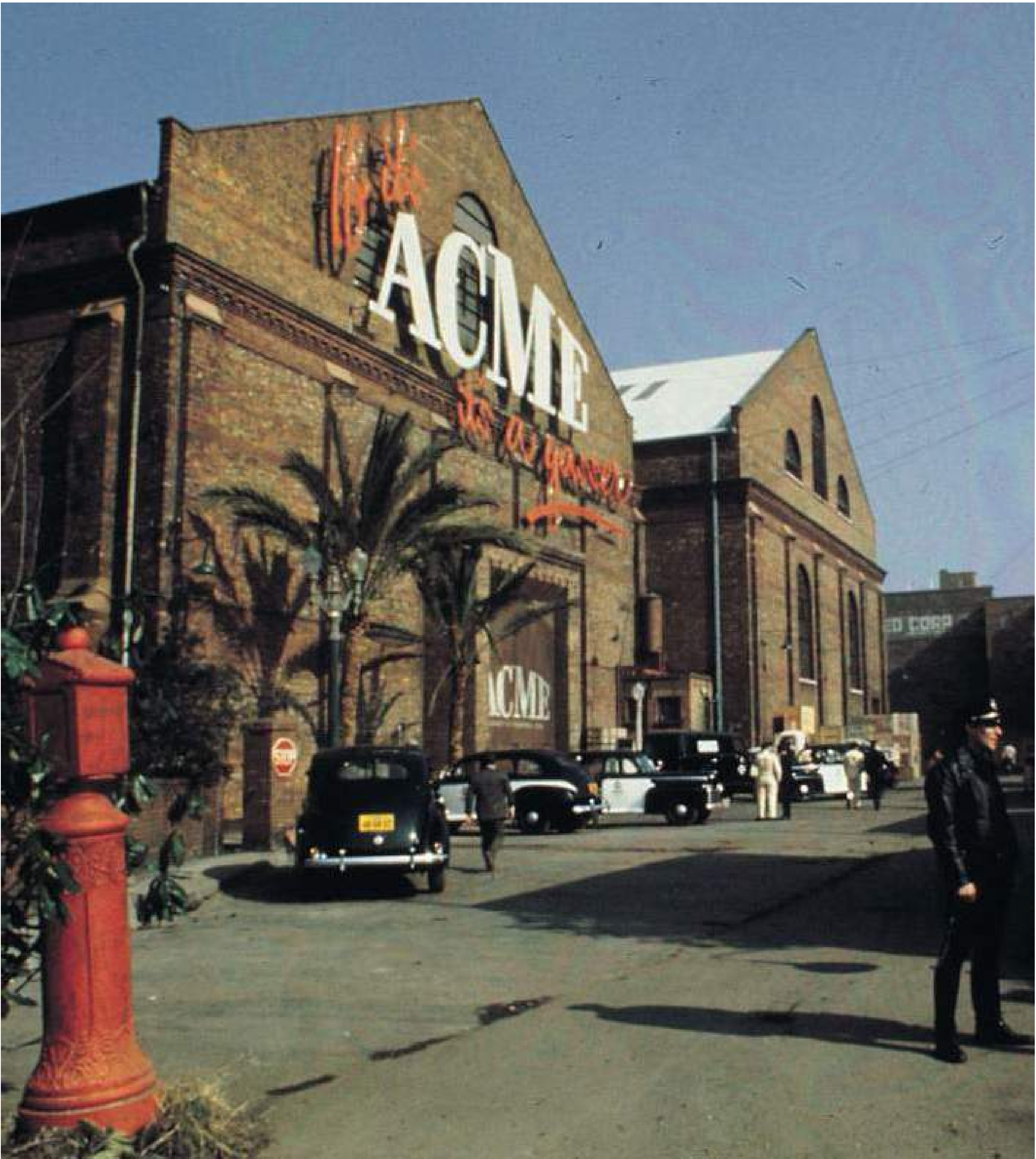
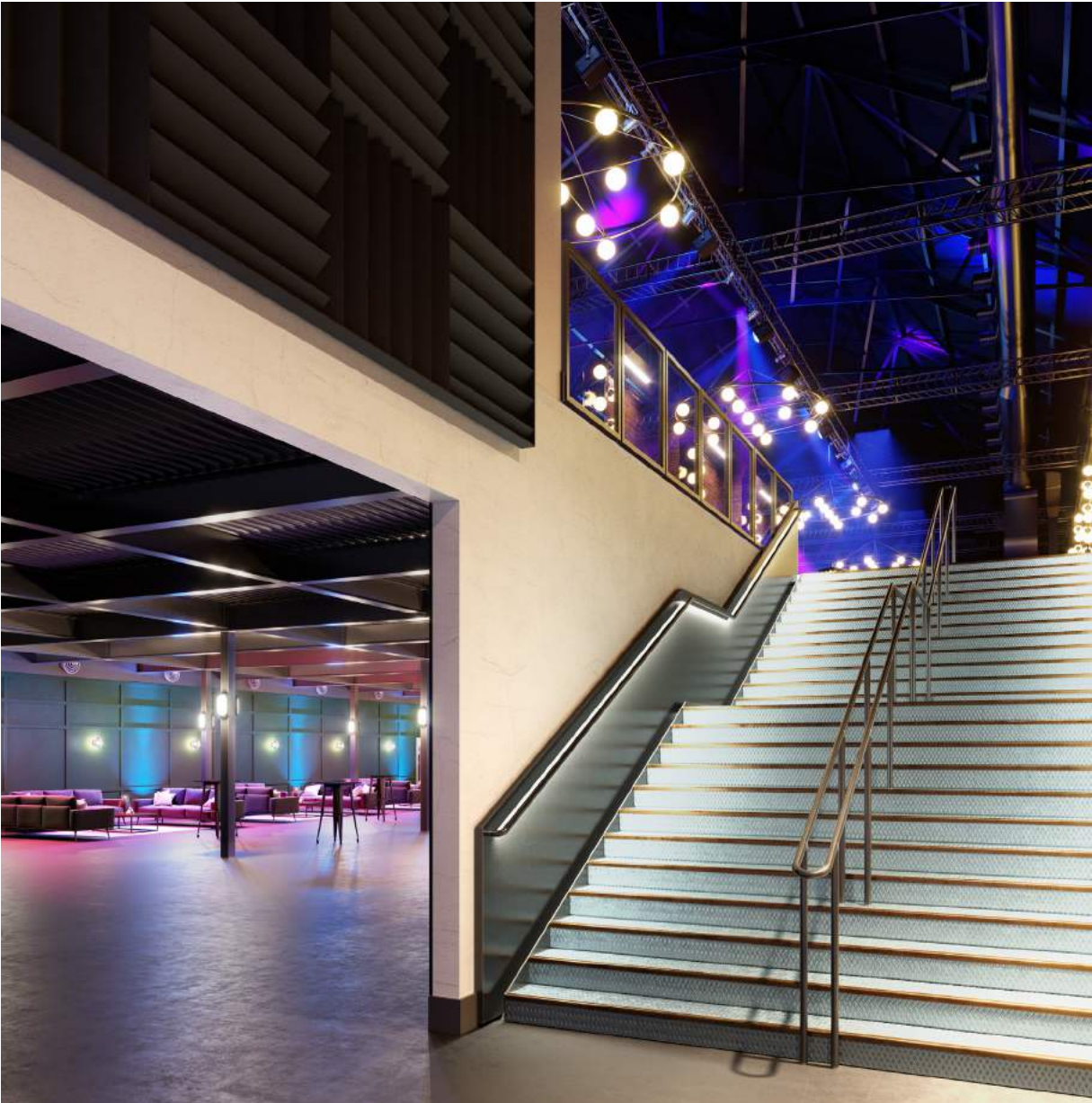


# ABOUT

Exhibition London is a new multi-purpose music and events venue located in the heart of the Westfield London development. This stunning Victorian structure was first built in 1899 and was originally used as an engine house for Central London Railways. Iconic TFL aesthetics remain in place, with the tiled interior walls and red brick lending unique character to this vibrant venue with 1,271sqm usable floor space.

The event space spans across two floors; the Ground Floor comprising the entrance foyer, reception space and four additional rooms and the main event area, situated on the First Floor, with 775 sq metres of uninterrupted floor space and a flexible stage. A dynamic and adaptable environment with multiple spaces, Exhibition London is an ideal choice for receptions, conferences, exhibitions, award dinners, product launches, location filming and live music events.

Westfield London provides a wide range of branding opportunities across the shopping centre and surrounding areas. The ability to harness the footfall and exposure of Westfield’s public spaces and media opportunities in conjunction with a cutting edge venue is unprecedented in London.



# VENUE SPECIFICATIONS

Dimensions					Capacity				
Event Space	l (m)	w (m)	h (m)	sq m	Reception	Dinner	Theatre	Exhibition	Concerts
Ground Floor	31	16	3.45	496	750	320	428	500	N/A
First Floor	38	25	8.48*	775	1,500	800	960	1,000	2,800
Other Spaces					<div>*Stage mother grid: 8.48m high   Main room mother grids: 6.32m high   Truss supported by mother grids: 5.67m high</div> <div>Note: Individual space capacities are subject to seating, production, event activities and fire exits.</div> <div>Note: Capacities and dimensions are all subject to change due to final licensing.</div>				
Loading Bay Doors		Width: 4m	Height: 2.11m	-					
Goods Lift (SWL: 2,500 KG)		Width: 2.8m	Height: 2m	Depth: 2.96m					
Rigging Weight		tbc							
Green Room 1		16m²							
Green Room 2		15.8m²							
Green Room 3 & 4		11.6m²							

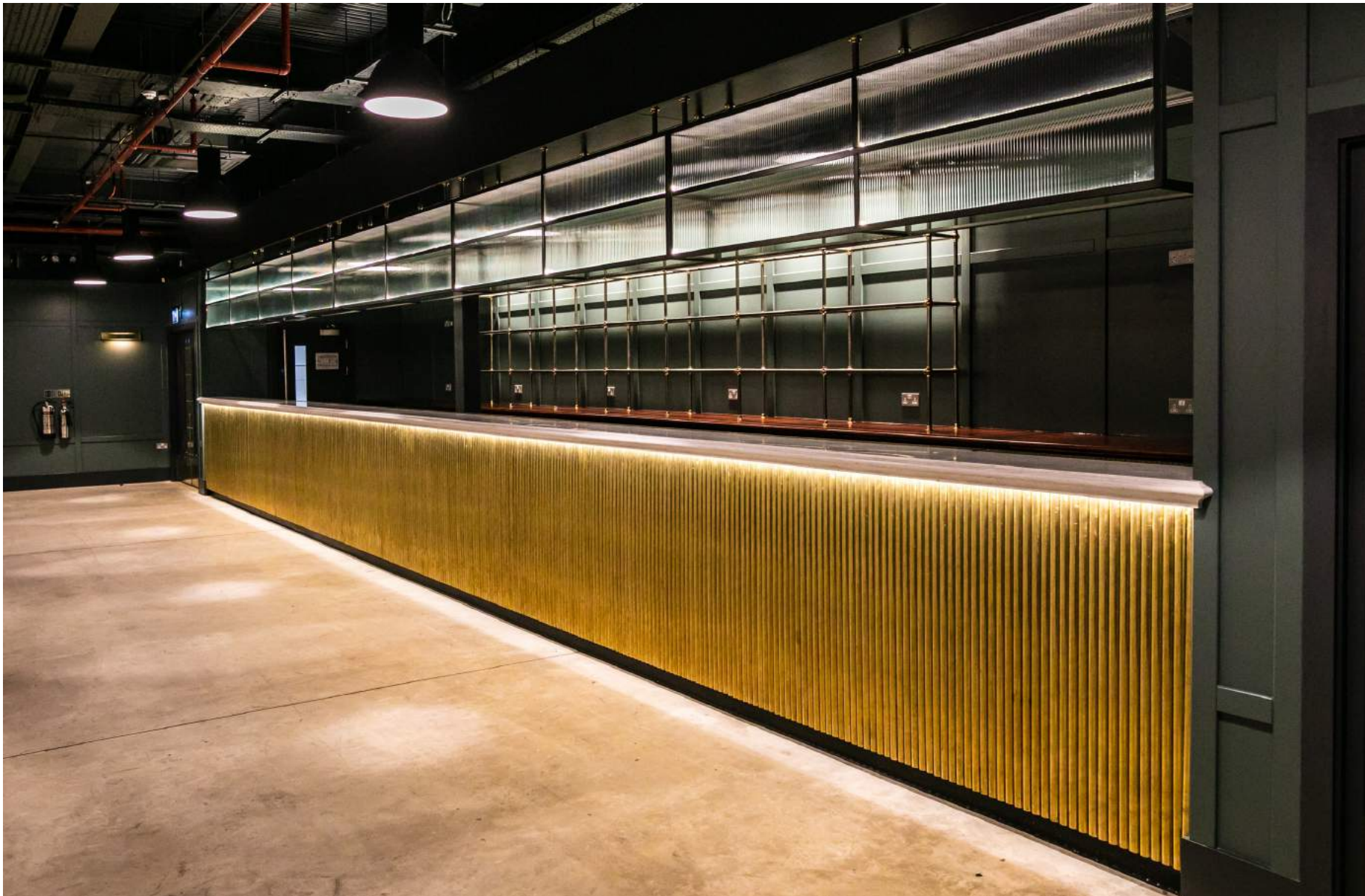
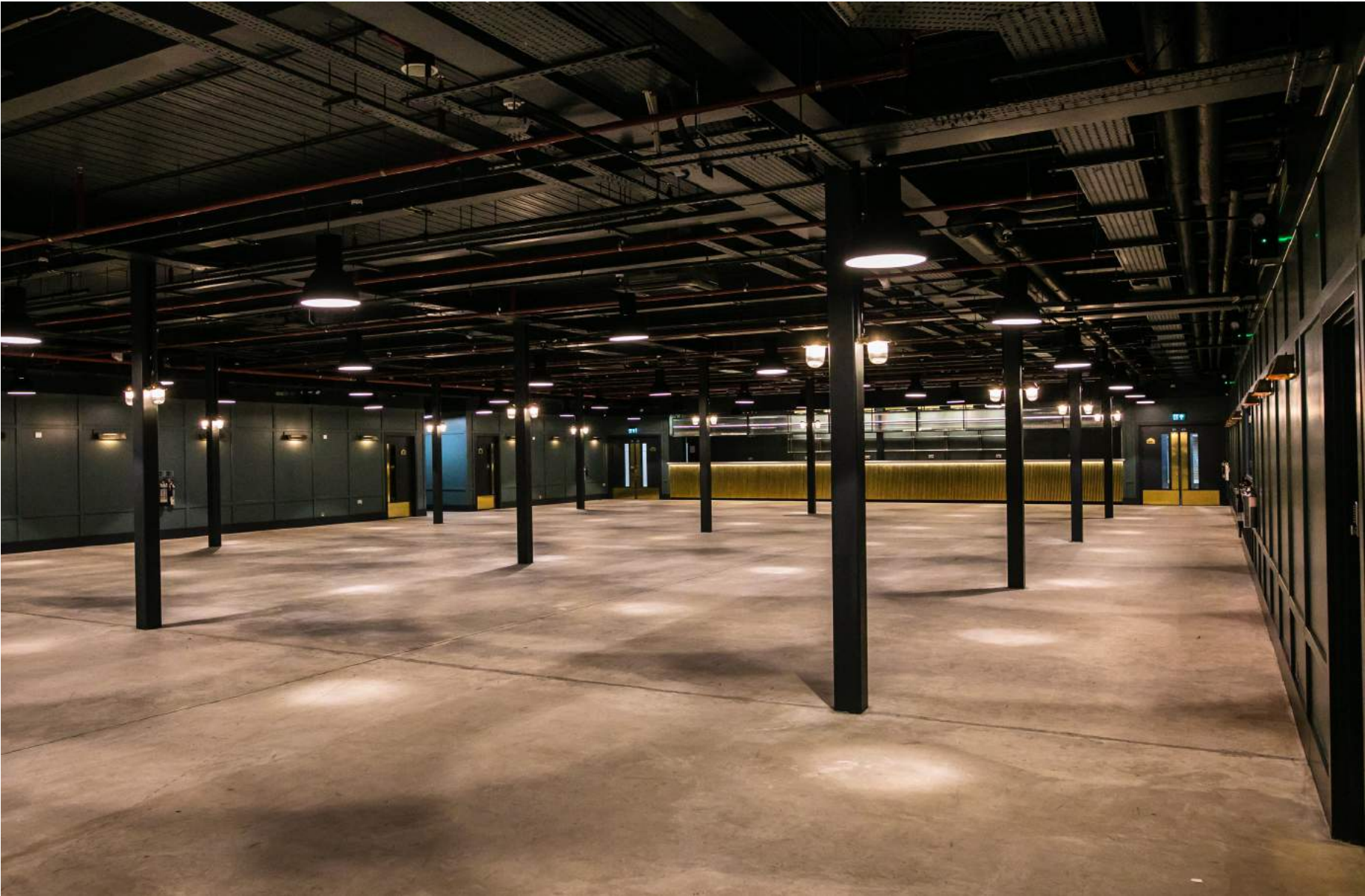
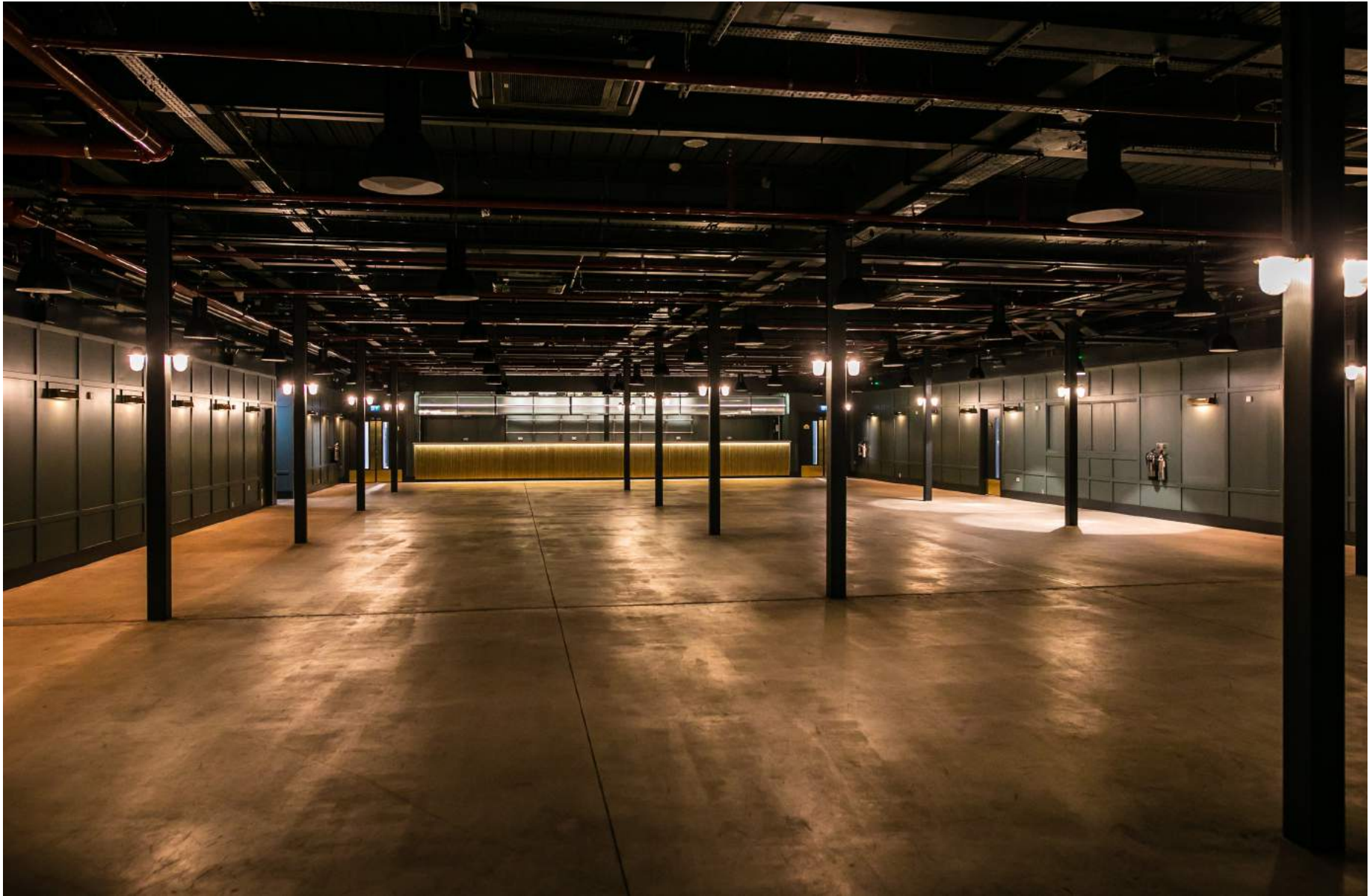
# GROUND FLOOR

Guests arrive into 496 sq metres of impressive foyer and reception space, featuring a long, beautifully crafted bar, classic Obsidian Green panelled walls, polished concrete floor, atmospheric decorative lighting and timber and brass finishings.

The Ground Floor provides cloakroom and WC facilities, alongside four additional areas that can be used as green rooms, dressing rooms or production offices, all with direct access to the First Floor stage area.

The foyer is an ideal space to host a pre-dinner drinks reception, informal catering or break out sessions. It can also work seamlessly as an extension to the First Floor, for larger exhibitions and events.

496 sq m | 31m(l) x 16m(w) x 3.45m(h) | max capacity: 750  
Note: Individual space capacities are subject to seating, production, event activities and fire exits.



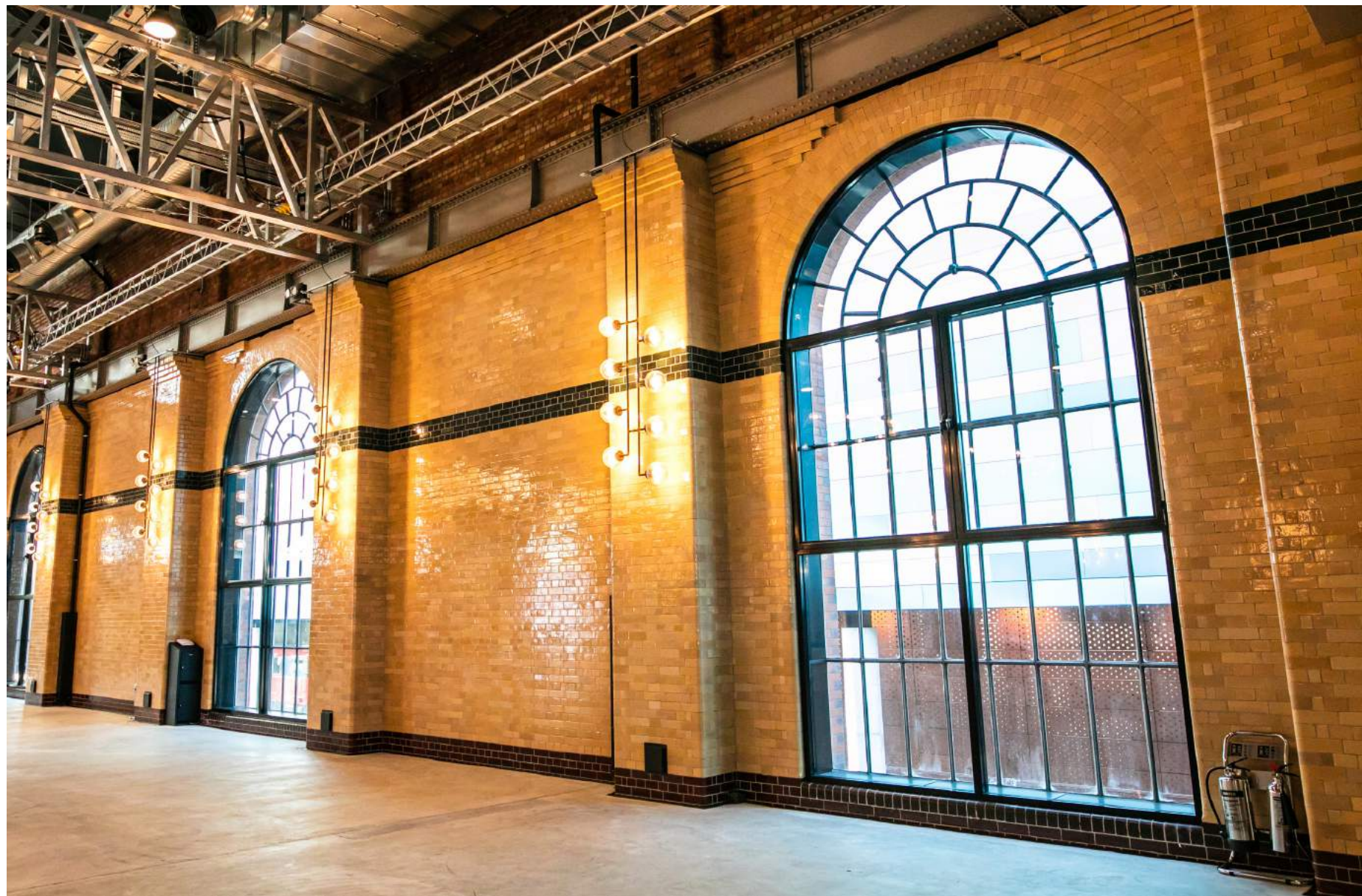
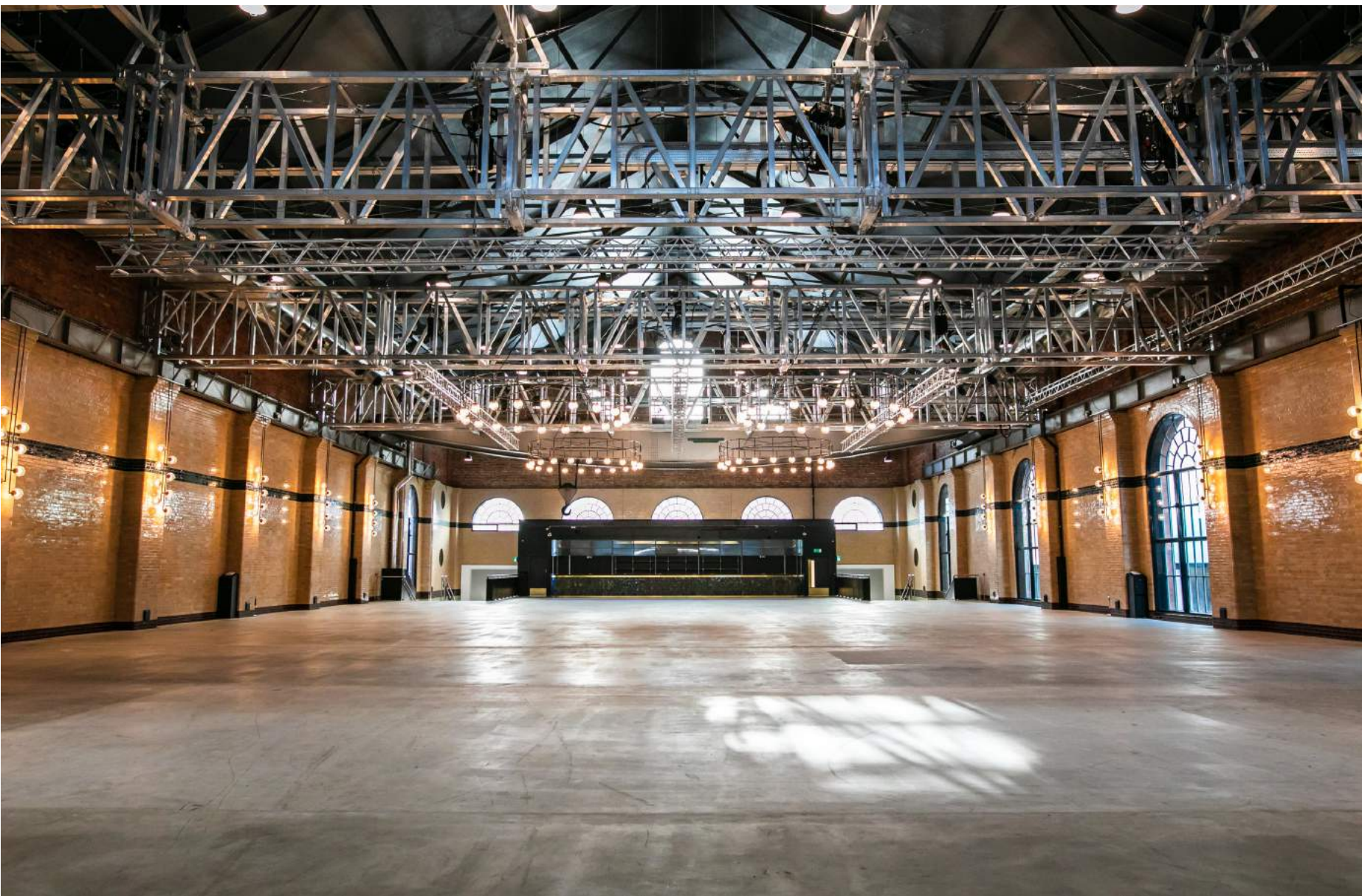
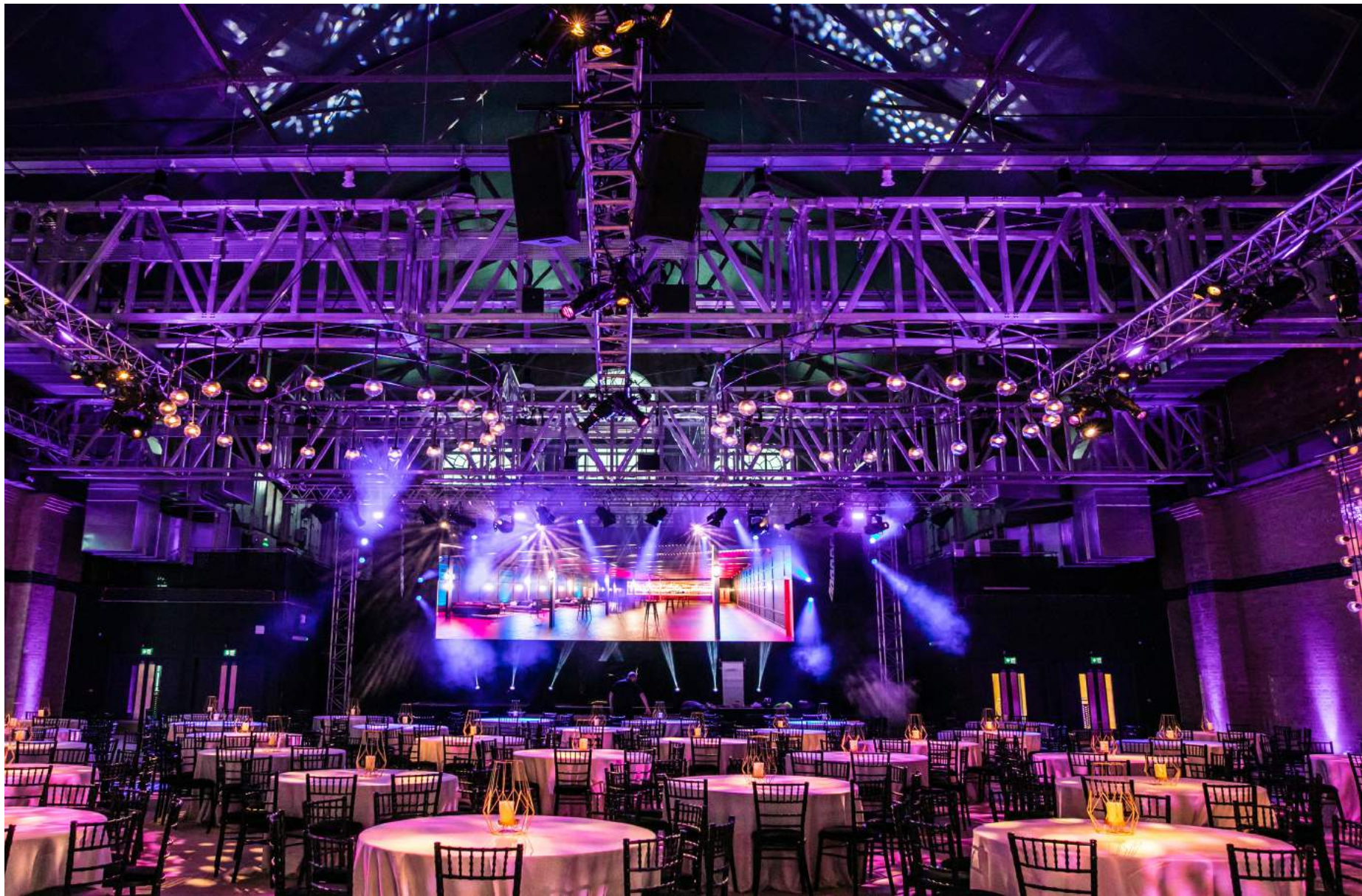
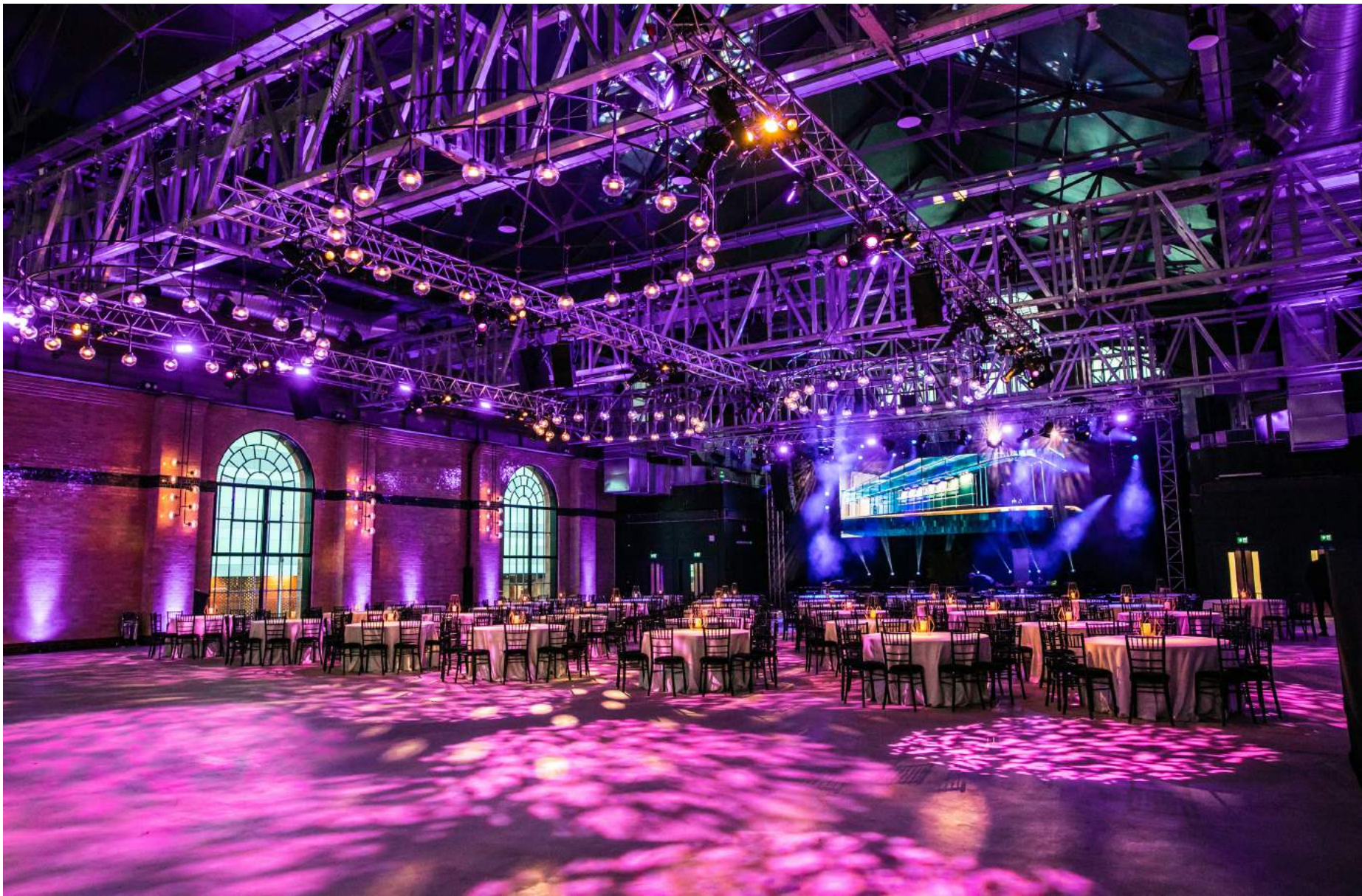
# FIRST FLOOR

Two stunning, glossy black steel staircases open directly into 775 sq metres of main event space. As guests enter the room, they will be wowed by the original high pitched ceiling with exposed roof trusses, original crane structure, polished concrete flooring, brass finishings and decorative lighting. Servicing the main events area are two beautiful bars; one fixed and one movable, both crafted from reclaimed timber, zinc and antique brass.

The First Floor features removable staging infrastructure, allowing for multiple room configurations. Exhibition London boasts a digital audio system specified for live music, providing spectacular sound and acoustics as well as a high-end lighting rig, both of which will be available for events as a plug and play option.

This impressive in-house set-up makes Exhibition London the perfect choice for all large-scale events.

775 sq m | 38m(l) x 25m(w) x 8m(h)\* | max capacity: 2,396 (music) / 1,500 (corporate)  
\*8m to truss, 9m to beams and 16m to the apex.  
Note: Individual space capacities are subject to seating, production, event activities and fire exits.

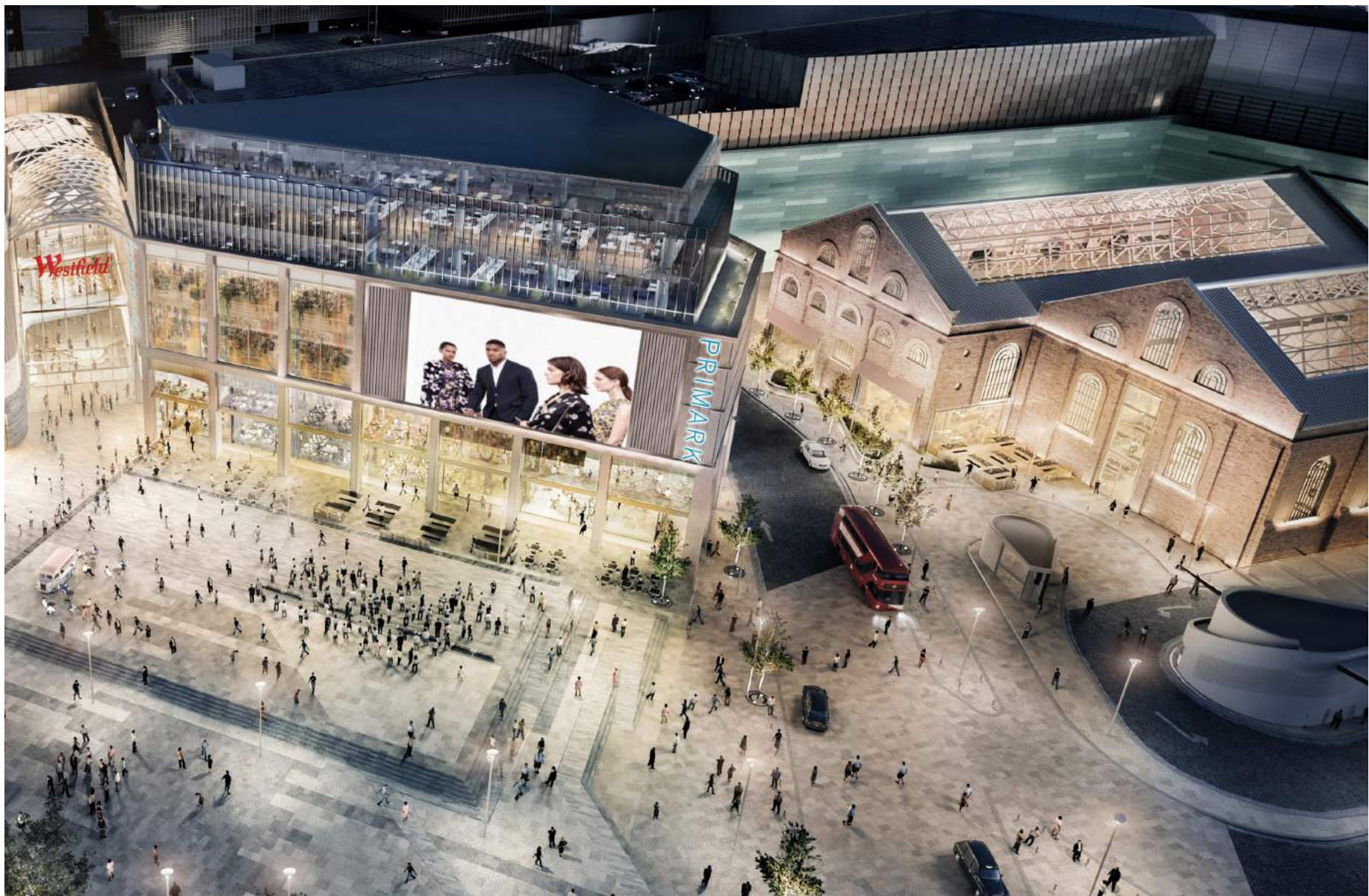


# BRANDING OPPORTUNITIES

Working in partnership with Westfield London, there is ample opportunity to boost brand awareness through high impact media and event locations across the shopping centre and surrounding areas.

From Shepherd's Bush Underground station to The North Atrium and Westfield Square, brands can curate memorable and unique marketing campaigns anchored by a stand-out event at Exhibition London.

Further opportunities include: tapping into Westfield London's digital network, which comprises of eight large landscape LED screens located across the centre, flown media banners placed in prime locations and sampling and leafleting sites.



# CATERING

Exhibition London is an impressive event space spanning across two floors and has been built specifically to facilitate a wide range of bespoke events. Create has been appointed as the venue’s exclusive in-house caterer after the results of an extensive tender process.

Create is one of London’s leading event caterers, with over 30 years of unrivalled experience in the events industry this ensures each event runs seamlessly from the moment of enquiry until the last guests leave.

The team at Exhibition London and Create will help guide you through the planning of your event, taking care of all the necessary aspects in ensuring the delivery of a one of a kind experience – leaving you as the Event Planner stress free and your guests, delighted and thrilled.

We love what we do and our passion shines through at every stage, we strive to make every step of your event journey a breeze and nothing excites our team more than an exciting new brief for our incredible venue.



# EXHIBITION LONDON

Exhibition London  
Ariel Way  
London  
W12 7NS

## UNDERGROUND

Four Underground stations provide easy access to Exhibition London, which is just a few minutes walk away.  
Central Line: Shepherd's Bush and White City.  
Hammersmith & City Line: Wood Lane and Shepherd's Bush Market.

## OVERGROUND

The Shepherd's Bush National Rail station has direct connections to Willesden Junction, Kensington Olympia, West Brompton and Clapham Junction. Services run every 15 minutes in each direction Monday to Saturday, with 1-2 trains each hour on Sundays.

## BUS

White City Bus Station: 31, 49, 148, 207, 237, 260, 607 and C1  
Shepherd's Bush: 72, 94, 95, 220, 272, 283, 295 and N207.

## CAR PARKING

24h car parking available at Westfield

## CONTACT US:

Amy Pearson  
[amy.pearson@exhibitionlondon.co.uk](mailto:amy.pearson@exhibitionlondon.co.uk)  
[hire@exhibitionlondon.co.uk](mailto:hire@exhibitionlondon.co.uk)  
02084984937  
[www.exhibitionlondon.co.uk](http://www.exhibitionlondon.co.uk)

